

Parent Institute - Organogram

Rayat Shikshan Sanstha: Governing Bodies

President

Vice President

Chairman-Managing Council

Secretary

**Joint Secretary
(Secondary)**

**Joint Secretary
(Higher Education)**

Auditor

**College Development
Committee**

Principal

**Regional
Office -South**

**Regional
Office -
North**

**Regional
Office -
Central**

**Regional
Office -West**

**Regional Office
-Raigad**

Regional Chairman

Inspector

Head Master



[Signature]
PRINCIPAL
MAHATMA PHULE MAHAVIDYALAYA
PIMPRI, PUNE-411 017.

Rayat Shikshan Sanstha: Committees

General Body

Managing Council

Executive
Committee

Board of Life
Member

Account
Committee

Coordination
Committee

Higher Education
Committee

School Committee

School Academy

Local Managing
Committee/College
Development
Committee




PRINCIPAL
MAHATMA PHULE MAHAVIDYALAYA
PIMPRI, PUNE-411 017.

College - Organogram

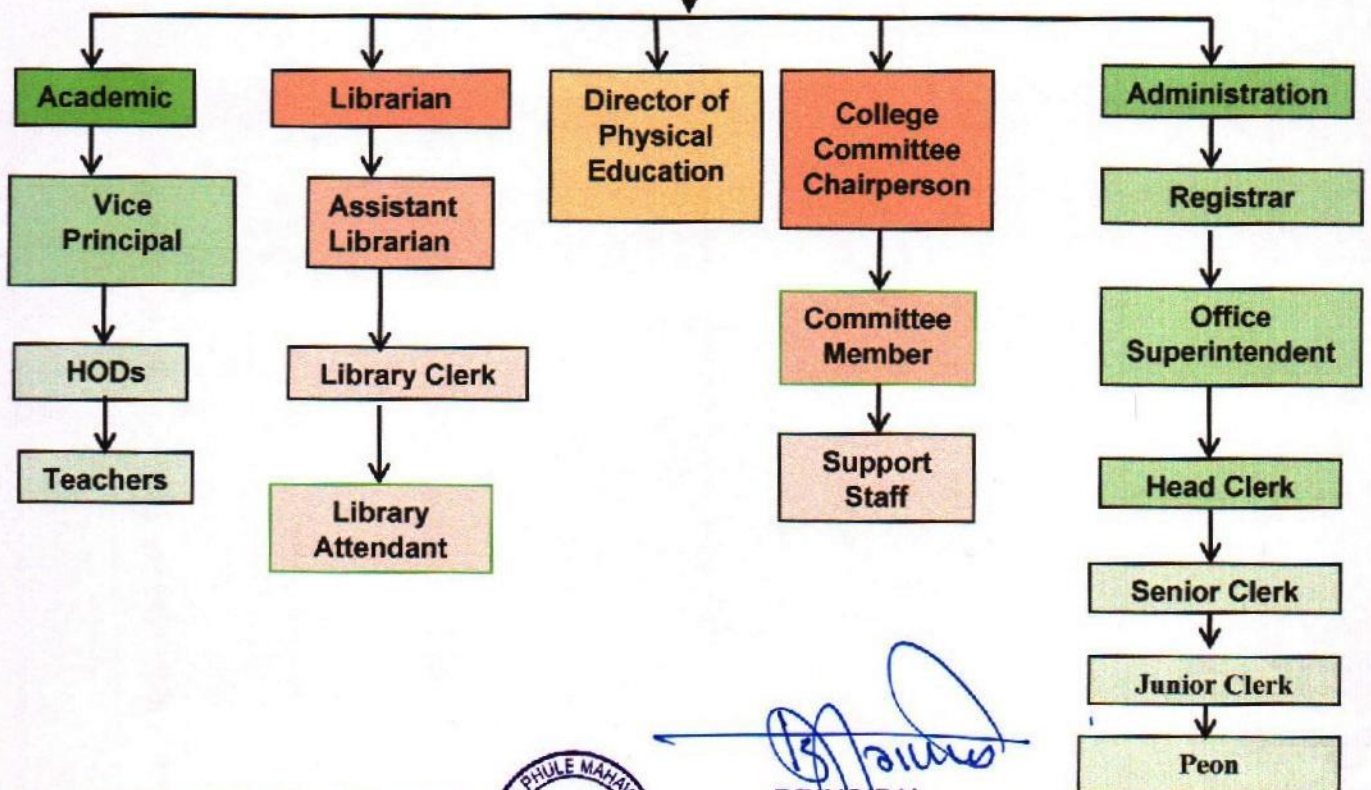
Rayat Shikshan Sanstha


Mahatma Phule Mahavidyalaya, Pimpri, Pune-17

College Development Committee

Principal

IQAC



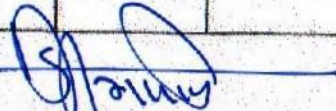

PRINCIPAL
MAHATMA PHULE MAHAVIDYALAYA
PIMPRI, PUNE-411 017.



Rayat Shikshan Sanstha, Satara
Head Office
Organizational Structure: Department Overview

| Sr | 1 | 2 | 3 | 4 | 5 | 6 | 7 | 8 | 9 | 10 | 11 |
|------------------------|------------------------|----------------------------|-----------------------|--|----------------------|--|----------------------------|-----------------------|--|----------------------------|------------|
| Department | Higher Education | Secondary Education | Audit | Establishment | Accounts and Finance | Estate | Probodhini | PRO | Agriculture | Legal | University |
| Head of the Department | Jt. Secretary (H.E.) | Jt. Secretary (S.E.) | Jt. Secretary (Audit) | Establishment Officer | Finance Officer | Estate Officer | Managing Director | Compliance Officer | Agriculture Officer | Law Officer | Pro- VC |
| 1 | Colleges | Pre-Primary-Nursery to SSC | Audit | Establishment 1. Higher 2. Secondary 3. Sanstha | Finance | Land (a) Non Agricultural (b) Agricultural | Probodhini Projects | Publicity | Projects | Opinion on Legal Matters | |
| 2 | Ashram Schools | Five Region | Audit Compliance | HRD | Accounts | Record Keeping of Farm i.e. Agricultural Land. | Short Term Courses | Liaising | Agri. R & D. | Legal guidance to branches | |
| 3 | NAAC/UGC/ Proposals | Jr. Colleges | | Staff Welfare | Taxation | Building Construction | Publications | Officers Coordination | Guidance to Academic Programs | RTI | |
| 4 | Skill Development | Technical School | | Telephone | Budget | Engineer Services Architect Services Structural Services | Centenary Year Celebration | Record | Cultivation of Agri Land and Allied Activities | MoU | |
| 5 | Rayat Science Projects | MCVC | | Press | | | | Inward-Outward | Marketing of Agri Produce | Purchase | |
| 6 | CII | ITI | | Others | | | | Security | Implementation of Schemes of Govt. | | |
| 7 | Autonomous Colleges | D.Ed. | | | | | | IT Dept. (HOD) | | | |
| 8 | RIRD | English Medium School | | | | | | Allied | | | |
| 9 | | International School | | | | | | | | | |
| 10 | | Open School | | | | | | | | | |
| 11 | | Examinations | | | | | | | | | |
| 12 | | Rayat Science Projects | | | | | | | | | |




PRINCIPAL
 MAHATMA PHULE MAHAVIDYALAYA
 PIMPRI, PUNE-411 017.




Secretary
 Rayat Shikshan Sanstha, Satara